

FIRST PRESBYTERIAN CHURCH, MEDFORD
Sunday, May 14, 2023
5:00 PM

JAZZ VESPERS

Peter Anastos Quartet



The Artwork of Mike Fitch

PROGRAM

Opening Music	Anastos Quartet
Welcome	Murray Richmond
Reading	Murray Richmond
Music	Anastos Quartet
Meditation	Murray Richmond
Art Notes	Mike Fitch
Closing	Murray Richmond
Music to Go Home By	Anastos Quartet

Thank you, Friends, for the generous freewill offerings that you put in the entrance basket in order to keep our **Jazz Vespers** program going.

Our Guest Musicians this Month are:

Peter Anastos
Trumpet and Flugelhorn

Peter Anastos is a trumpeter, composer, and arranger. He has many original compositions to his credit. In 2005 he formed his own group in the Bay Area, *Peter Anastos & Iter*, which features his original work. and has since produced two albums. Peter has recorded three cds as a leader, the last one, "Sempiternity", being released in 2022. Over time he incorporated the influences of his Greek heritage into the music and added a bouzouki to the instrumentation which allowed the band to expand its experimental horizons beyond that of the hard bop originals. Peter has also written arrangements for big bands, including the big band at the Jazz Conservatory in Berkeley, CA. Peter has played with such notables as Karrin Allyson, Steve Erquiaga, and Frank Martin. He currently plays with his own small ensembles around the southern Rogue Valley. Peter and his wife, Angela Koregelos, moved to Ashland in 2018.

Paul Turnipseed

Guitar

Guitarist and vocalist Paul Turnipseed developed his musical style and sensibility in his hometown of New Orleans, where he shared the stage with many of the city's finest musicians. He studied at The University of New Orleans in the Jazz Studies Program under the tutelage of many great musicians and educators including, Steve Masakowski, Ellis Marsalis, and Harold Battiste. Paul arrived in Southern Oregon in December 2012 by way of Los Cabos, Mexico, where he had lived and performed since 2005 after leaving New Orleans as a result of Hurricane Katrina.



Turnipseed can be heard performing as a solo act, with the Paul Turnipseed Trio, LOVEBITE, The Danielle Kelly Jazz and Soul Projects, The Brian Swan Band, Sage Meadows, and with various other local musicians.

Mark Hamersley

Bass

Locals know **Mark Hamersley** as the swingingest sideman in Southern Oregon. If you're a jazz fan, then you've probably already seen Mark on classical guitar or the upright bass, always maintaining a high standard of performance in the Rogue Valley. You might find Mark at La Baguette Music Cafe, The Wild Goose, Lark's Medford, the Grape Street Bar and Grill with the Southern Oregon Jazz Orchestra, or the Britt Performance Garden. In Santa Cruz and Monterey, he was a regular in the swing band "Wally's Swing World", working at five-star hotels, and the San Jose and Monterey Jazz Festivals, performing with Wynton Marsalis, Dan and Matthew Brubeck, Smith Dobson, and Brazilian vocalist, Claudia Villela.



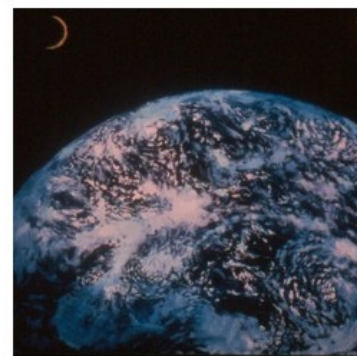
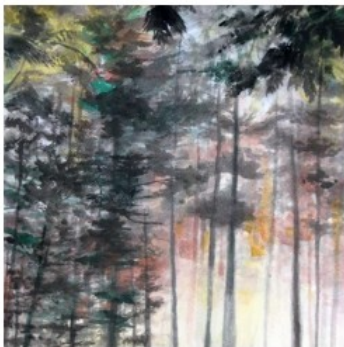
Chris Matthews

Drums

Chris Matthews, percussion/drum set. Chris is a Rogue Valley native and has been active in the music scene for over 20 years. He studied percussion under Terry Longshore at SOU, and jazz piano from the late Robin Lawson. Currently, Chris is most active playing with the local hard-rock band Flat Patty. With a broad experience playing for concert bands, ensemble, RVSO, OSF and pit orchestras, various jazz, rock and reggae groups in the valley, he takes pride in being a flexible supporting musician in almost any situation.

The Art of Mike Fitch

I've been making art about as long as I remember. An early memory is seeing an illustrated scroll my sister made—a story about a dragon. Seeing that it was possible to create a visual world, I was hooked, and have been drawing and painting ever since. For years I drew mostly dinosaurs, an early passion of mine. Next came elaborate scenes of knights and Roman legions. In the '60s I discovered magic markers and felt pens, and I made sprawling psychedelic creations inspired in part by artists like Peter Max and San Francisco poster artists like Rick Griffin and Mouse Kelley. During this period I also became fascinated by the night sky and astronomical art. I also became profoundly influenced by Native American and Pre-Columbian art during this period then came an awareness of the surrealists: artists such as Dali, Magritte, Max Ernst. My work in the '70s and '80s reflected these influences. I began experimenting with watercolors in the '90s, and have mostly stuck to them ever since. For me there is no other medium so alive, with such a flowing, reactive quality. The focus of more current paintings is simple, with relatively few elements: trees, water, birds, sky. These days I find myself drawn to painters in the American wilderness tradition and the Hudson River School, artists like Frederic Church and Thomas Moran, as well as the Northwest School including Mark Tobey and Morris Graves. Echoes of Cubism and Abstract Expressionism are other influences that pop up in my work from time to time. I am also a life-long musician and percussionist, playing timbales with Salsa Brava and drums with "Not Too Shabby", as well as among numerous groups throughout the Rogue Valley in Southern Oregon. I've also collaborated with the Oregon Shakespeare Festival, playing in productions of Robert Schenkkan's *Handler*, directed by Bill Rauch, and the World Premiere Musical *The Unfortunates*, directed by Shana Cooper, as well as many Green Shows.



Special Thanks to:

Rev. Murray Richmond & Robin Blomquist

Peter Anastos, Paul Turnipseed, Mark Hamersley, Chris Matthews

Mike Fitch – Artist

Russ Snyder – video, Andy Ullrich - photographer

Ginni and Dudley Peterson - greeters

Bob and Sandi Frey - greeters

Paulette Avery, Tam Moore, Elizabeth Mahan – publicity

Tom McDermott – sound and lights

**And the wonderful members of
First Presbyterian Church, Medford
and you, the community participants,
for supporting this endeavor.**

First Presbyterian Church

85 South Holly, Medford, Oregon 97501

541 779-1711 – FPCM@firstpresmedford.org